

Please enjoy the sightseeing tour boat

## Naniwa OSAKA Exploration Cruise with Rakugoka

For detailed information, please refer to a brochure of various JR WEST stations.

### Rediscover "the Water metropolis of Japan" Osaka.

A Rakugo comedian will serve as a guide, to let you know more about Osaka by using their humor. You will see sluice like the Panama Canal, very low bridges, Osaka City Central Public Hall, and the famous signs of Dotombori, there are many famous popular tourist spots in Osaka! We are inviting you to see a new Osaka!



katsura Kintaro   katsura Akashi   Hayashiya Someta



※ In addition, there are other Rakugo comedians serving as guides.

#### Cruise time / route ( it takes about 90 minutes )

##### Yumesaki route of the river

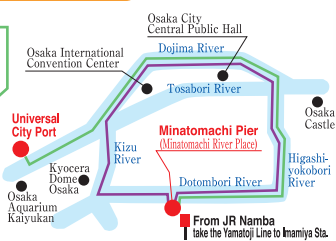
Departure at 10:00  
Universal City Port (departure)  
→ Minatomachi Pier (arrival)

##### Loop route of the river

Departure at 12:00・14:00  
Saturdays, Sundays, holidays  
16:00

From the end of March, at the middle of April  
19:00

Minatomachi Pier  
(departure and arrival)



※ When the Dotombori river's route is closed, We are unable to pass through the center part of Dotombori

※ Not all boats run every day, and for more information, please contact our company.

#### Fees

Adults 3,000 Yen   ◇ Box lunch (Bento) 1,800 Yen  
Children 1,000 Yen

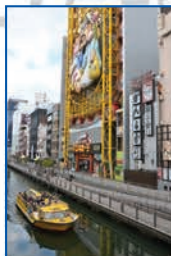
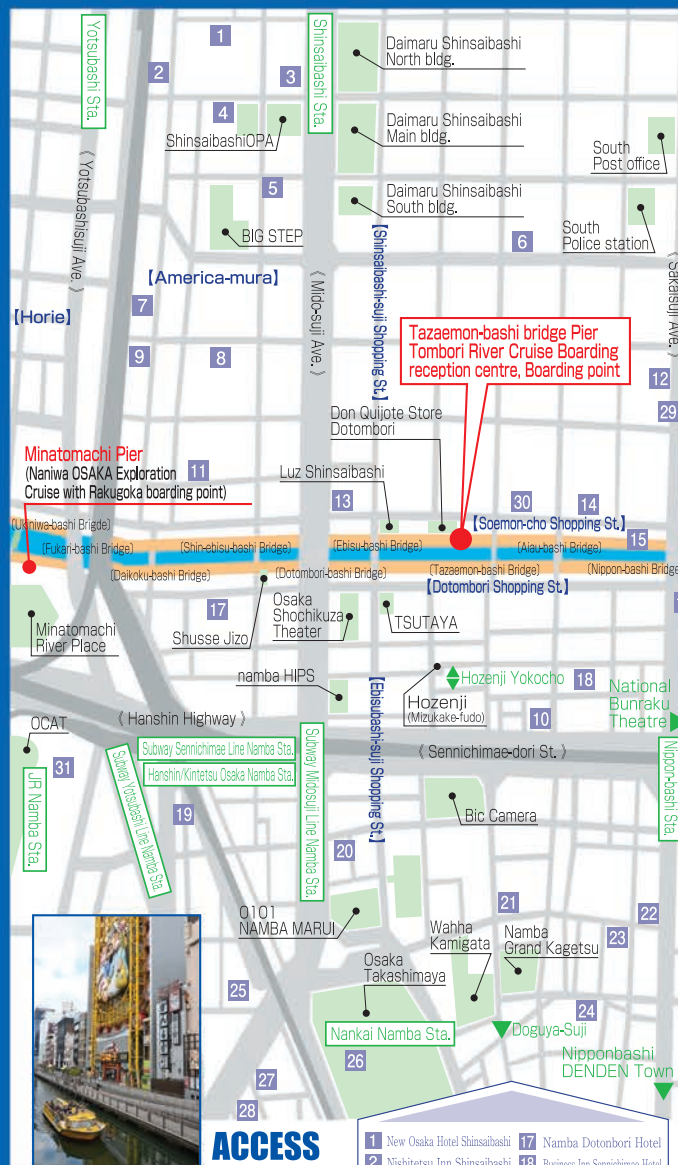
※ Please reserve two days before.  
※ A box lunch can't be prepared for cruise departing at 10:00.

#### Tickets

We accept your reservation three months in advance.

Ipponmatsu Shipping Co.,Ltd. TEL.06-6441-0532 (9:00~18:00)  
http://www.ipponmatsu.co.jp

■ Tea, beer, juice and snacks, etc. will be sold on the boat. ■ Drinks and food are prohibited to take onto the boat. ■ No smoking on the boat. ■ Due to weather, seascape, tide level, the starting time of the sluice, river construction and so on, it is possible for route to change, cruises to be delayed, and to be canceled.



#### ACCESS

Boarding reception centre  
(Ticket office)

Boarding Point  
(Tazaemon-bashi bridge Pier)

Ipponmatsu Shipping Co.,Ltd.  
TEL.06-6441-0532   http://www.ipponmatsu.co.jp

Boarding reception centre is on the first floor of "Don Quijote store Dotombori" at the north bank of the "Dotombori River Esplanade(Tombori Riverwalk)", and the boarding point is in front of the reception centre. It is marked with an oval yellow Ferris wheel (Don Quijote Store Dotombori). (photograph above)

#### The closest station

From JR. subway, Kintetsu, Nankai line at "Namba Station" "Shinsaibashi Station"

- |                                    |                                      |
|------------------------------------|--------------------------------------|
| 1 New Osaka Hotel Shinsaibashi     | 17 Namba Dotombori Hotel             |
| 2 Nishitetsu Inn Shinsaibashi      | 18 Business Inn Sennichimae Hotel    |
| 3 Hotel Nikko Osaka                | 19 Business Inn Namba                |
| 4 Flexstay Shinsaibashi Inn        | 20 Midotsuji Hotel                   |
| 5 Hearton Hotel Shinsaibashi       | 21 Namba Oriental Hotel              |
| 6 Comfort Hotel Osaka Shinsaibashi | 22 Super Hotel Namba Nipponbashi     |
| 7 Tsurusawa Ryokan                 | 23 Namba Plaza Hotel                 |
| 8 ARROW HOTEL                      | 24 Business Hotel Nissei             |
| 9 Dormy Inn Shinsaibashi           | 25 Hotel Ichiei                      |
| 10 Red Roof plus Namba Osaka       | 26 Swissôtel Nankai Osaka            |
| 11 Osaka Teikoku Hotel             | 27 HOTEL IL CUORE NAMBA              |
| 12 Osaka Fujiya Hotel              | 28 Business Hotel Shin-Namba 1 gakan |
| 13 Cross Hotel Osaka               | 29 Hotel Kuramoto (frame outside)    |
| 14 ibis Styles Osaka Hotel         | 30 Holiday Inn Osaka Namba           |
| 15 Kaneyoshi Ryokan                | 31 Hotel Monterey Grasmere Osaka     |
| 16 Hotel Sunroute Osaka Namba      |                                      |

#### HOTEL

# とんぼり リバークルーズ

## Tombori River Cruise

The contents of the publication is the current information in March 2018.

Osaka Minami is like a joyful amusement park!  
Please set sail for Dotombori following our guides.

The last word in the ultimate sightseeing in Osaka!!



### Naniwa Community Tourism Consortium

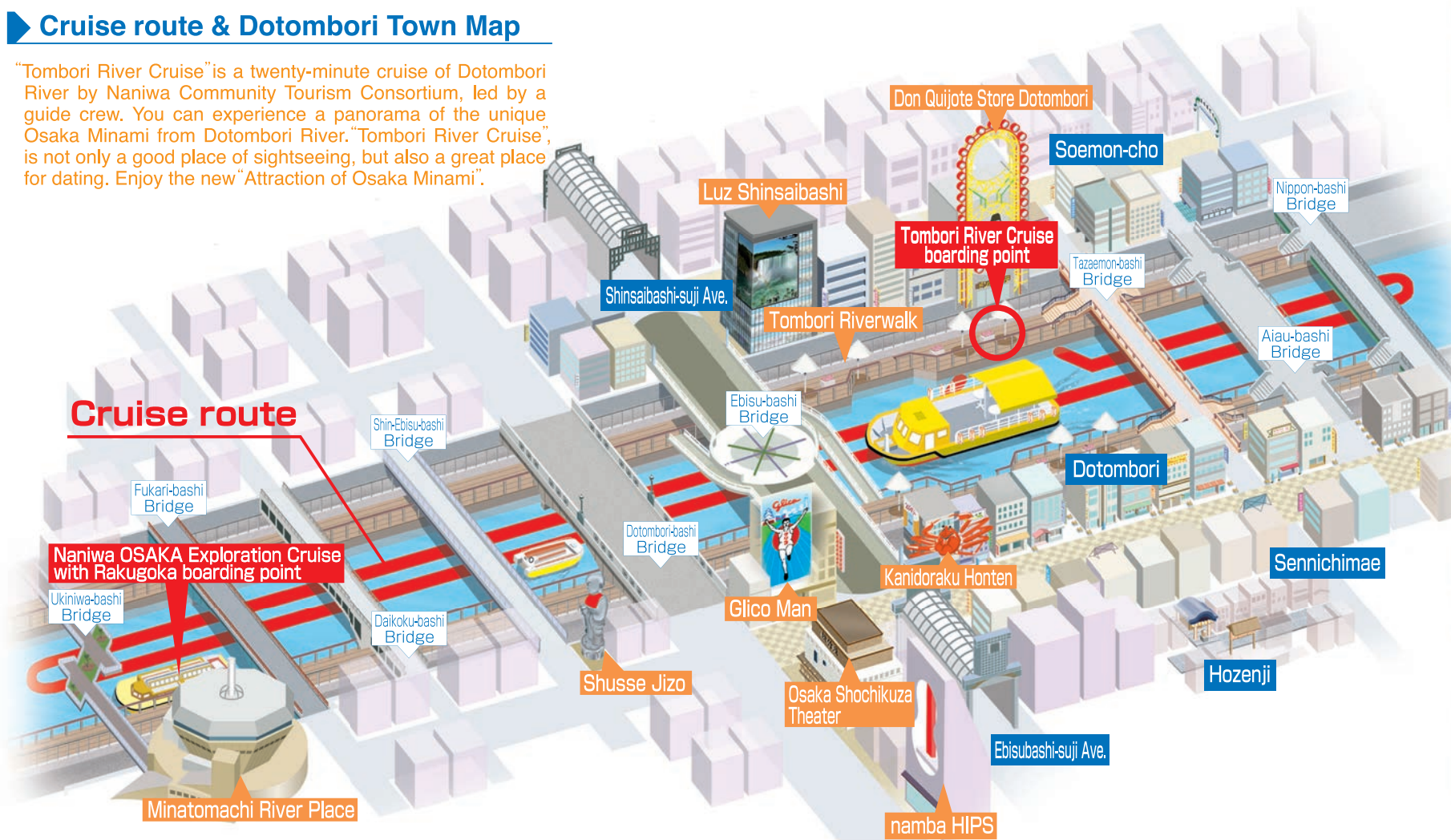
NPO Kankouryoku network Kansai, Dotombori Stores Association, Tombori River-walk Association, Ipponmatsu Shipping, IMPREGION, WDC, Jcom, Osaka City (sequence is out of turn / omitted salutation).

Cooperation : Ebisubashisui Promotion Unions, Soemon-cho Promotion Unions and other places



## Cruise route & Dotombori Town Map

"Tombori River Cruise" is a twenty-minute cruise of Dotombori River by Naniwa Community Tourism Consortium, led by a guide crew. You can experience a panorama of the unique Osaka Minami from Dotombori River. "Tombori River Cruise", is not only a good place of sightseeing, but also a great place for dating. Enjoy the new "Attraction of Osaka Minami".



## Cruise schedule

20 minutes/each boat

(Some boats may not be operating, according to circumstances)

<b>Weekdays</b>	<b>13:00 - 21:00</b>	The boat will depart on the hour and half hour.
<b>Saturdays, Sundays, Holidays &amp; busy days</b>	<b>11:00 - 21:00</b>	

■ On the busy day, we have extra boats every 10 or 15 min. ■ We will carry out normal cruises on light rain days. ■ Due to various causes such as river construction, region ritual ceremony, and big events, it is possible to change a cruises date and route, without notice. ■ Due to causes such as weather, seascape and tide level, cruises may be canceled.

For more information about cruise terms, dates and times, please refer to the website.  
<http://www.ipponmatsu.co.jp> or TEL.06-6441-0532 (9:00~18:00) Ipponmatsu Shipping Co.,Ltd.

## Passage fees

<b>Adults</b>	<b>900 Yen</b> (Incl. Tax / junior high school student and older)
<b>Children</b>	<b>400 Yen</b> (Incl. Tax / elementary school student)

※ An infant may accompany an adult is admitted free of charge. In case there are two infants, the second infant must pay for a child fare.

※ Passage tickets are valid on the day of issue only.



## Contact us

Ipponmatsu Shipping Co.,Ltd.  
<http://www.ipponmatsu.co.jp>  
TEL.06-6441-0532 (9:00~18:00)

◆ **Shipping company**  
Ipponmatsu Shipping Co.,Ltd. <http://www.ipponmatsu.co.jp>  
BAN PUBLIC RELATIONS INCORPORATED <http://www.banpr.co.jp>  
Ipponmatsu Kisen Co.,Ltd. <http://www.ipponmatsu-kisen.com>

◆ **Running company**  
IMPREGION Co.,Ltd.

## Fun places around the port.



**Ebisubashi-suji Shopping St.**

From Ebisu-bashi Bridge to Nankai Namba station, lined with many shops from Edo period.



**Shinsaibashi-suji Shopping St.**

From Ebisu-bashi Bridge to Nagahori street, lined with fashionable shops and long-established shops.



**Soemon-cho Shopping St.**

Good place for night life in Minami. "Cobbled streets" was completed on March 2013.



**Dotombori Shopping St.**

It's called "Kuidaore no machi". 2015 is the 400th anniversary of digging.



**Sennichimae Shopping St.**

From Dotombori river to Sennichimae street and also connects to Hozenji-Yokocho.



**Hozenji & Hozenji Yokocho**

There is "mizukake fudo-son" which is Buddha statue covered with moss. Good place to visit. Hozenji-Yokocho is also good to walk and dine in.

## There are more exciting spots in Minami area!

